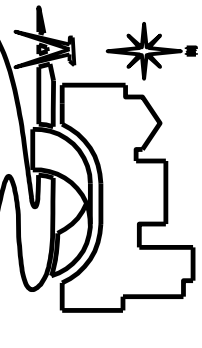


GENERAL FOUNDATION NOTES:

1. ALL COLUMN FOOTINGS ARE CENTERED ON COLUMNS AND WALL FOOTINGS ARE CENTERED BENEATH WALL U.N.O.
2. FOR GENERAL STRUCTURAL NOTES AND SPECIFICATIONS SEE S1.
3. STEPPED WALL FOOTINGS ARE INDICATED THUS:
4. SEE ARCHITECTURAL PLANS FOR LOCATIONS OF RECESSED SLABS, SLOPED AREAS IN SLABS ON GRADE, AND CURBS. DRAWINGS.
5. VERIFY ALL OPENINGS AND DIMENSIONS WITH ARCHITECTURAL DRAWINGS.
6. INSTALL FOUNDATION DRAIN TILE PER RECOMMENDATIONS OF SOILS REPORT AND AS INDICATED ON ARCHITECTURAL SECTIONS.
7. COORDINATE LOCATION OF STEPPED FOOTINGS WITH CIVIL DRAWINGS. MAINTAIN MINIMUM FROST COVER OF 3'-6" AT BUILDING FOUNDATIONS AND 3'-0" AT FOOTINGS FROM BOUNDARY. VERIFY COVER REQUIREMENTS WITH GEOTECHNICAL REPORT.

NEGEN
ARCHITECTS
STUDIO: 22517 178th Ave, Suite 200
Cald Springs, Minnesota 55503
TELEPHONE: 320.685.3304
FACSIMILE: 320.685.4039

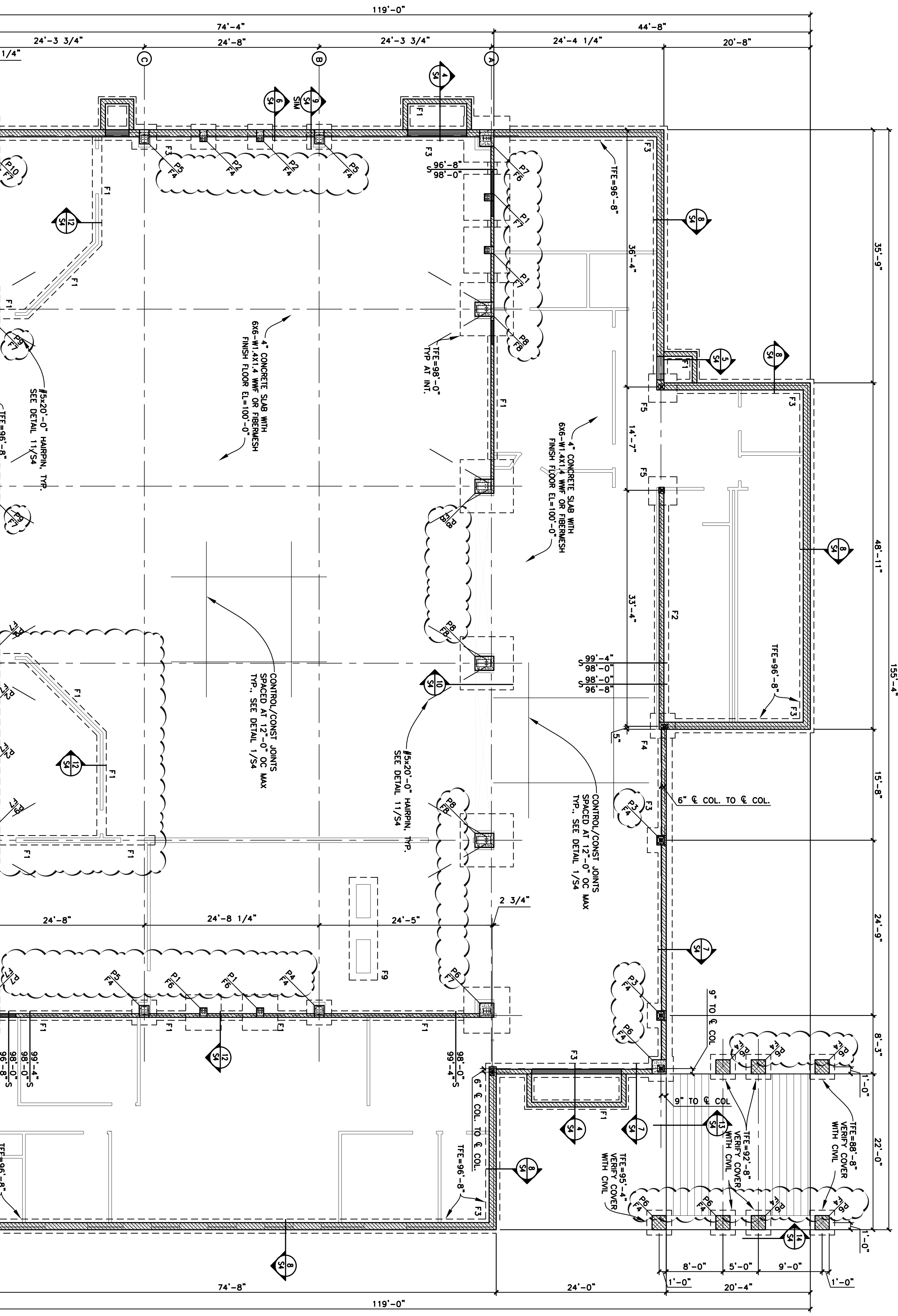
CONSULTANTS



DUFFLY ENGINEERING AND ASSOCIATES, INC.
STRUCTURAL - CIVIL - SURVEYING - MECHANICAL - ELECTRICAL
350 Highway 10 South, Suite 101 St. Cloud, MN 56304
Phone: (320) 259-6575
Fax: (320) 259-6991
Email: mol@duffyeng.com



14201 Cedar Avenue South
Apple Valley, MN 55124
952.432.4332



PIER SCHEDULE

MK	SIZE	REINFORCING
P1	12'x16'	4-#6 VERT & #3 TIES AT 12" OC
P2	12'x20'	4-#6 VERT & #3 TIES AT 12" OC
P3	16'x16'	4-#6 VERT & #3 TIES AT 12" OC
P4	16'x20'	8-#6 VERT & #3 TIES AT 12" OC
P5	16'x24'	8-#6 VERT & #3 TIES AT 12" OC
P6	24'x24'	10-#6 VERT & #3 TIES AT 12" OC
P7	24'x28'	10-#6 VERT & #3 TIES AT 12" OC
P8	24'x32'	12-#6 VERT & #3 TIES AT 12" OC
P9	24'x36'	12-#6 VERT & #3 TIES AT 12" OC
P10	28'x28'	12-#6 VERT & #3 TIES AT 12" OC

FOOTING SCHEDULE

MK	SIZE	REINFORCING
F1	1'-4"x1'-0"	2-#5 CONT
F1A	1'-4"x1'-0"	2-#7 CONT
F2	1'-0"x0'-8"	2-#7 CONT
F3	2'-0"x1'-0"	2-#5 CONT
F4	3'-6"x3'-6"x1'-0"	3-#5 EW
F5	4'-0"x4'-0"x1'-0"	4-#5 EW
F6	5'-0"x5'-0"x1'-0"	5-#5 EW
F7	6'-6"x6'-6"x1'-0"	6-#5 EW
F8	7'-6"x7'-6"x1'-4"	7-#5 EW
F9	FIELD VERIFY SIZE W/ SER	#5@12" OC 1&B

FOUNDATION PLAN

I hereby certify that this plan, specification or report was prepared by me or under my direct supervision and that I am a duly Licensed Engineer under the laws of the state of Minnesota.
Ryan J. Saverty, PE
 Date: 02-13-07 License No. 41971

PROJECT NO.: 06337
 DATE: 02-13-07
 SCALE: 1/8"=1'-0"
 DRAWN BY: JKD
 DRAWN BY: RJS

FOUNDATION PLAN
 1/8"=1'-0"