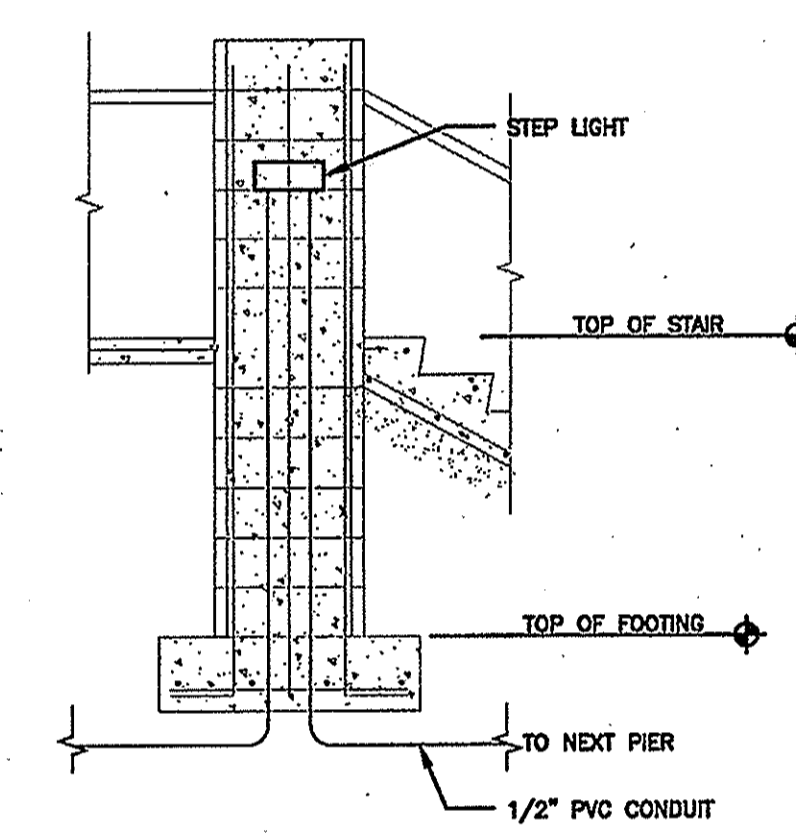
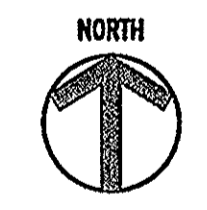
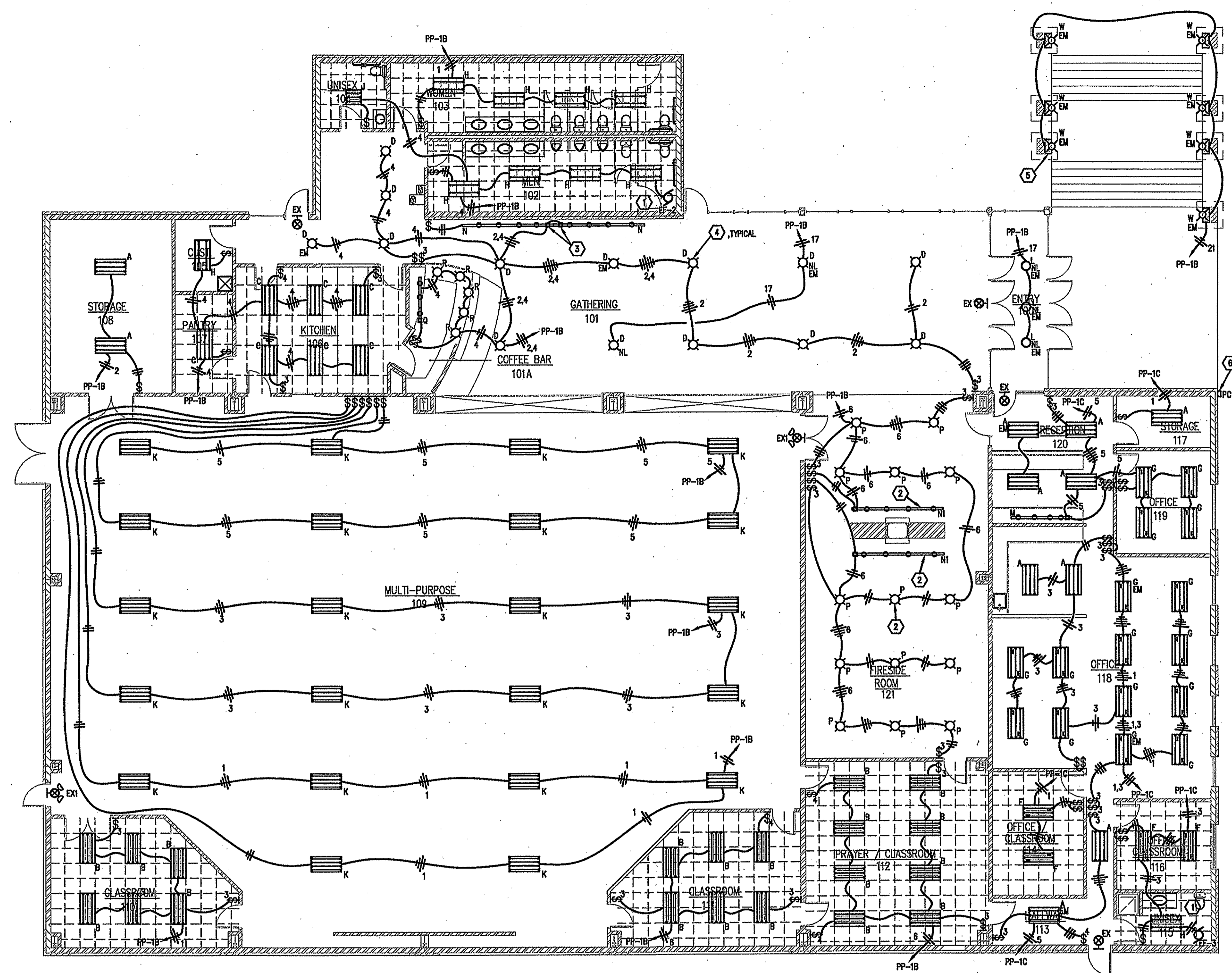


2 STAIR LIGHT FIXTURE MOUNTING DETAIL  
E1.4 SCALE: NONE



3 STAIR LIGHTS CONDUIT DETAIL  
E1.4 SCALE: NONE



1 LIGHTING PLAN  
E1.4 SCALE: 1/8" = 1'-0"

**LIGHTING PLAN NOTES**

- 1 EXHAUST FANS FOR BATHROOMS TO BE CONNECTED TO LIGHTING CIRCUIT.
- 2 TYPE P AND N1 LIGHT FIXTURES IN THIS ROOM ARE TO BE MOUNTED 12'-0" A.F.F.
- 3 MOUNT TRACK TYPE N ALONG BOTTOM OF JOISTS.
- 4 TYPE D LIGHTS IN GATHERING SHALL BE MOUNTED TO CEILING.
- 5 MOUNT STEP LIGHTS 2'-0" OFF STAIR IN CONCRETE BLOCK PILLAR. CENTER THE STEP LIGHT ON THE PILLAR. MOUNT EMERGENCY LED RIVER IN STORAGE ROOM, TOTAL OF 7 (1 FOR EACH STEP LIGHT).
- 6 PHOTOCCELL CONTROL FOR STEP LIGHTS. ELECTRICAL CONTRACTOR TO MOUNT PHOTOCCELL ON THIS SIDE OF THE BUILDING NEAR THE ROOF. ELECTRICAL CONTRACTOR TO VERIFY HEIGHT AND LOCATION WITH ARCHITECT AND OWNER.

**GENERAL NOTES**

1. SEE SHEET E1.4 FOR OUTDOOR LIGHTING PLAN.
2. SEE SHEET E6.1 FOR PANELBOARD SCHEDULES.
3. FOR SPECIFIC LIGHT TYPES, SEE LUMINAIRE SCHEDULE ON SHEET E5.1 FOR MORE DETAILS.
4. LIGHT FIXTURE LOCATIONS ARE APPROXIMATE LOCATIONS. ELECTRICAL CONTRACTOR TO WORK WITH MECHANICAL CONTRACTOR FOR PLACEMENT OF LIGHT FIXTURES. ELECTRICAL CONTRACTOR ALSO TO PLACE THE LIGHT FIXTURES IN A LOCATION TO NOT INTERFERE WITH THE CEILING BEAMS.
5. EM = EMERGENCY BALLAST. LIGHT FIXTURE TO BE SUPPLIED WITH EMERGENCY BALLAST. SEE LUMINAIRE SCHEDULE ON SHEET E5.1 FOR MORE DETAILS.
6. ELECTRICAL CONTRACTOR TO COORDINATE WORK WITH THE MECHANICAL CONTRACTOR FOR PLACEMENT OF THE LIGHTS IN THE SUSPENDED CEILING.
7. NL = NIGHT LIGHTS. THESE FIXTURES ARE TO REMAIN ON AT ALL TIMES.

REVISION	DATE

I hereby certify that this plan, specification or report was prepared by me or under my direct supervision and that I am a duly Licensed Engineer under the laws of the state of Minnesota.  
*R. Scott Jones*  
R. Scott Jones, P.E.  
Date: 02/09/2007 License No. 25389

**LIGHTING PLAN**

PROJECT NO:	06752
SCALE:	AS NOTED
DATE:	02/09/2007
DRAWN BY:	ALR
CHECKED BY:	RSJ

**DESIGN DEVELOPMENT**

**E1.4**