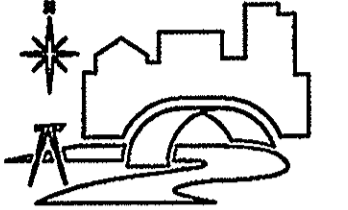

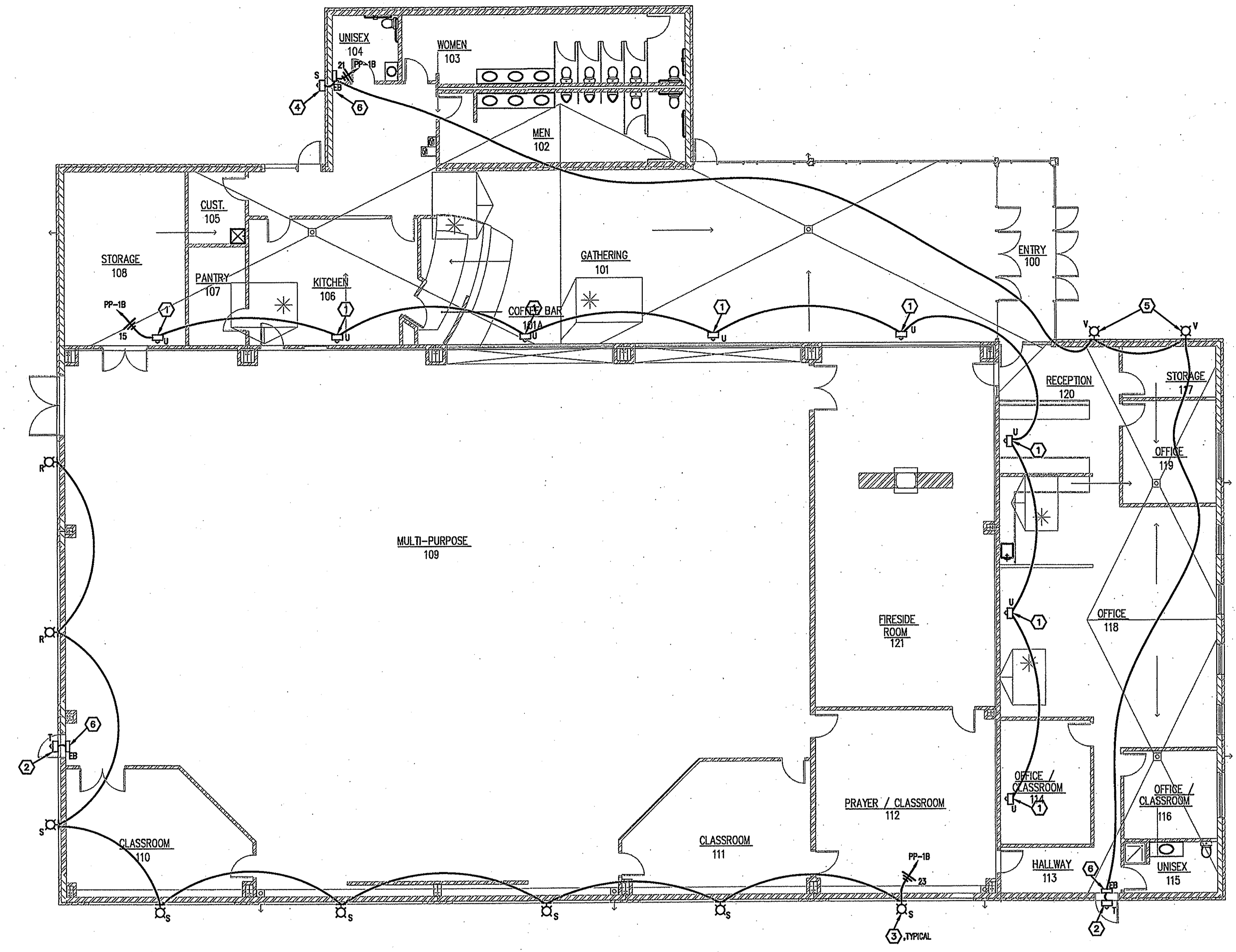



CONSULTANTS

DUFFY ENGINEERING AND ASSOCIATES, INC.
 STRUCTURAL - CIVIL - SURVEYING -
 MECHANICAL - ELECTRICAL
 350 Highway 10 South Suite 101 St.
 Cloud, MN 56304
 Phone: (320) 259-6575
 Fax: (320) 259-6991
 Email: mail@duffyeng.com


Mount Olivet
 Assembly of God
 14201 Cedar Avenue South
 Apple Valley, MN 55124
 952.432.4332



NORTH

1 OUTDOOR LIGHTING PLAN
 E1.4
 SCALE: 1/8" = 1'-0"


OUTDOOR LIGHTING PLAN NOTES

- ① LIGHTS TO BE MOUNTED ON ROOF IN THESE LOCATIONS. LIGHTS ARE TO SHINE UP ONTO BUILDING WALLS. SEE ARCHITECTURAL EXTERIOR ELEVATIONS FOR MORE INFORMATION. ELECTRICAL CONTRACTOR TO PLACE LIGHT FIXTURES ON ROOF NO MORE THAN 3'-0" AWAY FROM WALL.
- ② ELECTRICAL CONTRACTOR TO MOUNT LIGHT FIXTURE 1'-0" ABOVE DOORWAY.
- ③ WALL MOUNTED ACCENT FIXTURE TO BE DETERMINED. ELECTRICAL CONTRACTOR TO PLACE BOXES FOR THE LIGHTS 12'-0" A.F.G. SEE ARCHITECTURAL EXTERIOR ELEVATIONS FOR EXACT MOUNTING POSITIONS.
- ④ ELECTRICAL CONTRACTOR TO MOUNT WALL PACK FIXTURE 8'-0" A.F.G.
- ⑤ MOUNT TYPE U LIGHTS 10'-0" A.F.G. ELECTRICAL CONTRACTOR TO PROVIDE PHOTO CELL FOR THESE LIGHTS.
- ⑥ ELECTRICAL CONTRACTOR TO PLACE EMERGENCY FLUORESCENT BALLAST INSIDE THE BUILDING NOT MORE THAN 6 FEET AWAY FROM THE OUTDOOR FIXTURE.

GENERAL NOTES

- 1. FOR INDOOR LIGHT FIXTURES, SEE SHEET E1.3.
- 2. SEE ARCHITECTURAL PLANS FOR ACCENT LIGHTING LOCATIONS ON BUILDING.
- 3. REFER TO SHEET E6.1 FOR PANELBOARD SCHEDULES.
- 4. FOR SPECIFIC LETTER TYPES REGARDING LIGHT FIXTURES, SEE LUMINARIE SCHEDULE ON SHEET E5.1

REVISION	DATE

I hereby certify that this plan, specification or report was prepared by me or under my direct supervision and that I am a duly Licensed Engineer under the laws of the state of Minnesota.

 R. Scott Jones, P.E.
 Date: 02/09/2007 License No. 25389

OUTDOOR LIGHTING & PHOTOMETRIC PLAN

PROJECT NO.:	06792
SCALE:	AS NOTED
DATE:	02/09/2007
DRAWN BY:	ALR
CHECKED BY:	RSJ

DESIGN DEVELOPMENT