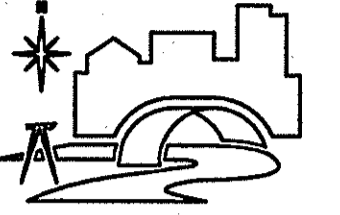


CONSULTANTS

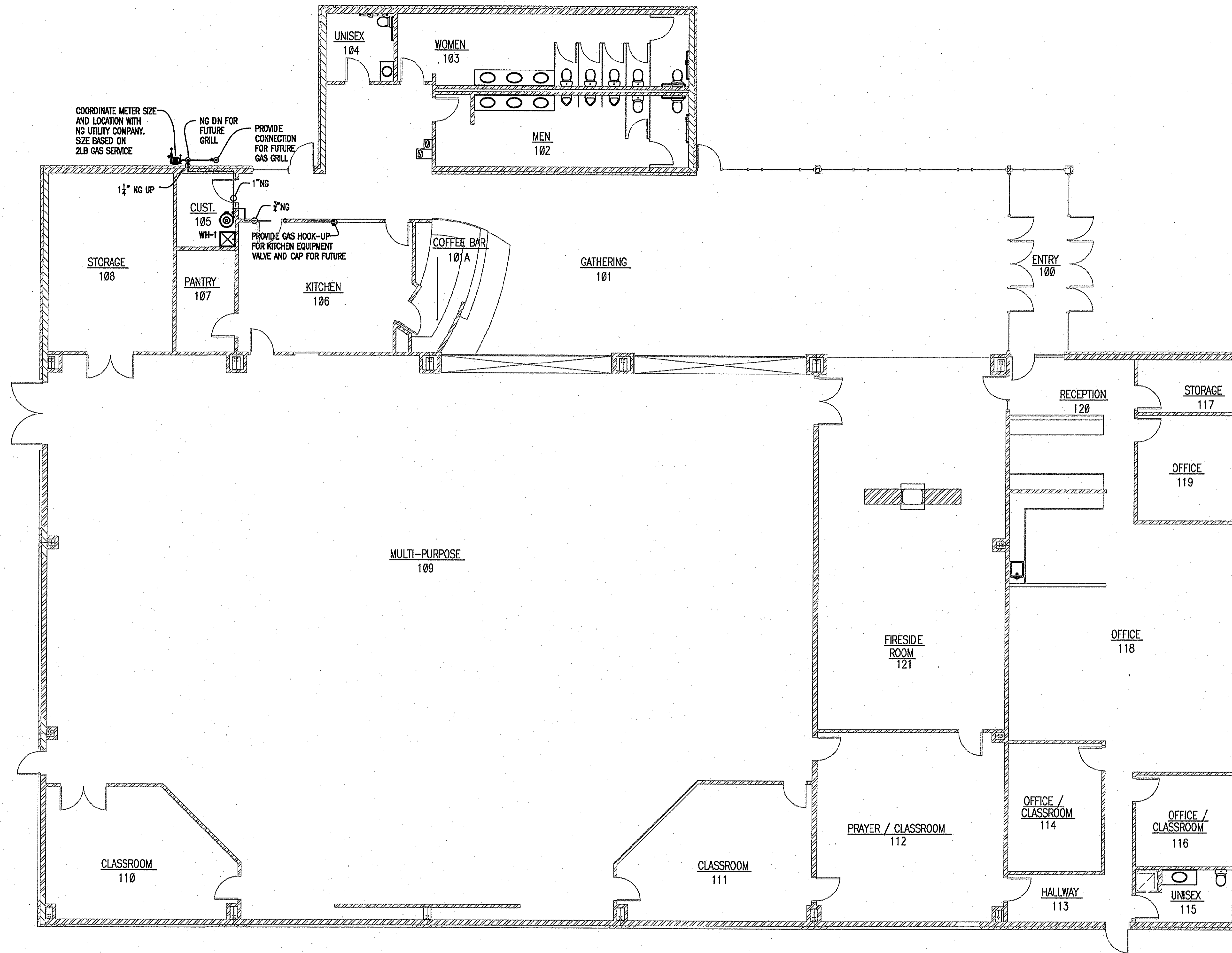


DUFFY ENGINEERING AND ASSOCIATES, INC.

STRUCTURAL - CIVIL - SURVEYING -
MECHANICAL - ELECTRICAL
350 Highway 10 South Suite 101 St.
Cloud, MN 55304
Phone: (320) 259-6575
Fax: (320) 259-6991
Email: mail@duffyeng.com



Assembly of God
14201 Cedar Avenue South
Apple Valley, MN 55124
952.432.4332



1
M1.2

MAIN FLOOR GAS PIPING PLAN

1/8" = 1'-0"

REVISION _____ DATE _____

I hereby certify that this plan, specification or report was prepared by me or under my direct supervision and that I am a duly Licensed Engineer under the laws of the state of Minnesota.

Perry R. Neller
Perry R. Neller, P.E.

Date: 2-09-07 License No. 22468

MAIN FLOOR GAS PIPING PLAN

PROJECT NO.:	06752
SCALE:	AS NOTED
DATE:	2-09-07
DRAWN BY:	KLH
CHECKED BY:	PRN

M1.2

Duffy Project File: 27-06752-M1.2