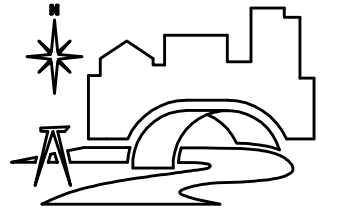


CONSULTANTS



DUFFY ENGINEERING AND ASSOCIATES, INC.

STRUCTURAL - CIVIL - SURVEYING - MECHANICAL - ELECTRICAL

350 Highway 10 South Suite 101 St.
Cloud, MN 56304
Phone: (320) 259-6575
Fax: (320) 259-6991
Email: mail@duffyeng.com



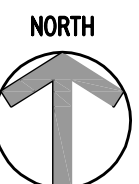
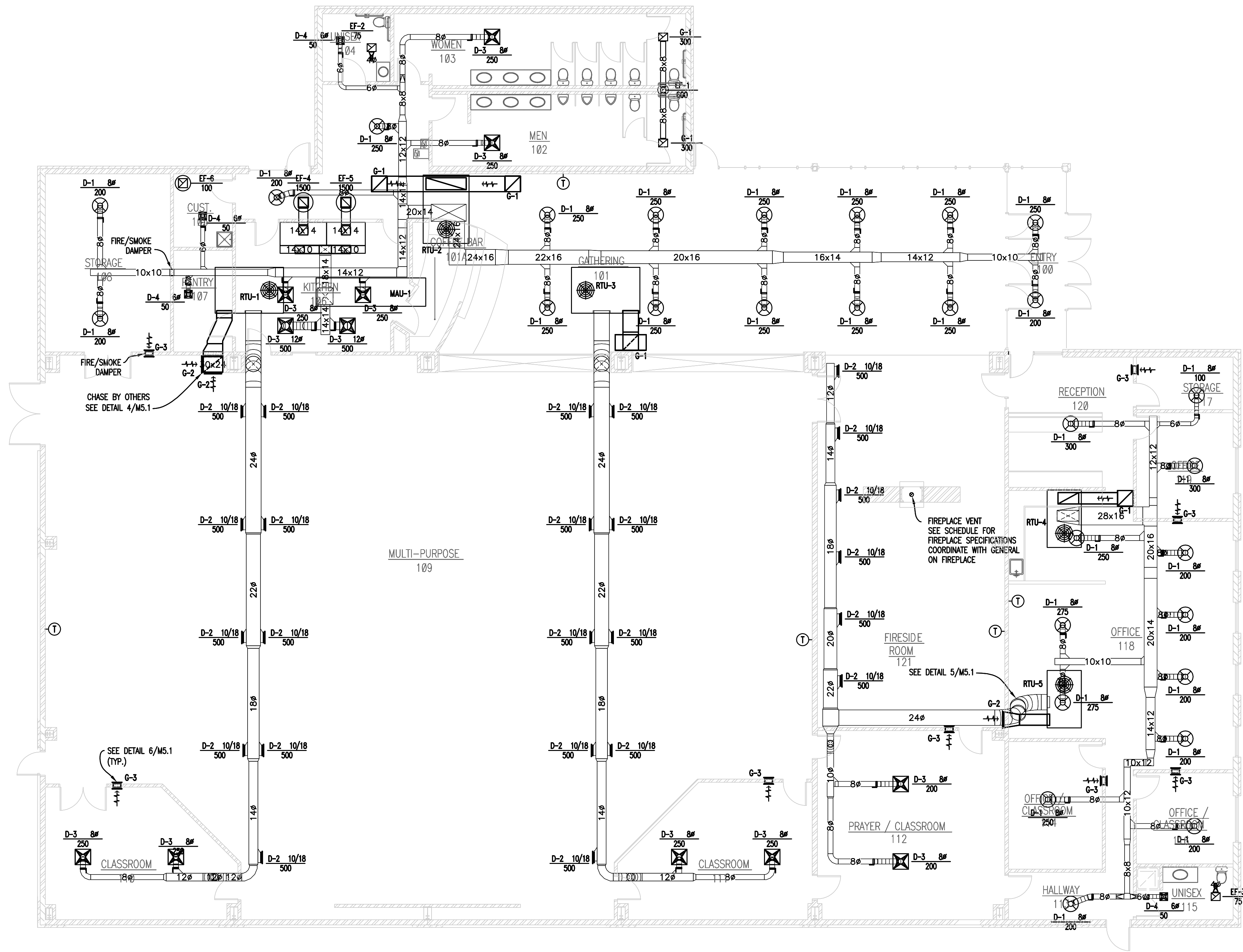
Assembly of God
14201 Cedar Avenue South
Apple Valley, MN 55124
952.432.4332

HVAC NOTES

- MECHANICAL CONTRACTOR TO FIELD VERIFY ALL EXISTING CONDITIONS, DIMENSIONS, UTILITIES, ETC. PRIOR TO BIDDING AND CONSTRUCTION.
- INSTALL ALL WORK IN ACCORDANCE WITH STATE AND LOCAL CODE REQUIREMENTS AND MALL CRITERIA.
- THE USE OF FLEXIBLE DUCT IS LIMITED TO 5'-0", NO ELBOWS.
- ALL DUCTS SHALL BE SEALED WITH DUCT SEALER SIMILAR TO UNITED SHEET METAL DUCT SEALER.
- INSULATE ALL NEW SUPPLY AIR RECTANGULAR DUCTS (IN CEILING SPACE) WITH MINIMUM R-8 EXTERIOR DUCT INSULATION, INSTALLED. ROUND DUCTS SHALL HAVE 1 1/2" EXTERIOR WRAP.
- PROVIDE TESTING AND BALANCING FOR ALL AIR SYSTEMS. SUBMIT REPORTS TO ARCHITECT.
- SUBMIT SHOP DRAWINGS TO ENGINEER FOR APPROVAL OF MAJOR MECHANICAL EQUIPMENT PRIOR TO ORDERING.
- SEE ALL OTHER DRAWINGS AND SPECIFICATIONS FOR ADDITIONAL WORK AND CLARIFICATIONS OR WORK TO BE PERFORMED.
- ALL OUTDOOR AIR INTAKES SHALL BE LOCATED A MINIMUM OF 10'-0" FROM EXHAUST VENT, PLUMBING VENTS, ETC.
- CONDENSATE FROM ROOFTOP EQUIPMENT SHALL DISCHARGE ONTO ROOF VERIFY WITH LOCAL CODE OFFICIALS. IF OBJECTIONABLE, EXTEND CONDENSATE PIPE TO APPROVED FLOOR RECEPTOR OR EXTEND TO APPROVED EXTERIOR LOCATION.
- ALL DUCTWORK SHALL BE GALVANIZED SHEET METAL CONSTRUCTED AND INSTALLED IN ACCORDANCE WITH SMACNA LOW-PRESSURE DUCT CONSTRUCTION STANDARDS. SIZES SHOWN ARE INSIDE CLEAR DIMENSIONS. MAKE ALLOWANCE FOR INTERNALLY LINED DUCTWORK. ALL DUCTWORK TO BE RUN AS HIGH AS POSSIBLE TO AVOID ANY CONFLICTS.
- SEE ARCHITECTURAL DRAWINGS FOR LOCATIONS OF DIFFUSERS, REGISTERS, GRILLES LOCATED IN THE CEILING GRID.
- INSULATE LAST 5 FEET OF DUCT FROM TOILET ROOM EXHAUST DUCT WITH 1 1/2" THICK FIBERGLASS DUCT WRAP.
- DUCTWORK LAYOUT SHOWN IS RECOMMENDED. ADJUST TO COMPLY WITH LOCAL CODE REQUIREMENTS AND AS BUILT CONDITIONS.
- PROVIDE 7 DAY PROGRAMMABLE THERMOSTATS WITH AUTO CHANGE OVER SUB-BASES.

16. KITCHEN HOOD EXHAUST DUCT TO BE CONSTRUCTED PER MFPA 96 STANDARD CHAPTER 7. DUCTS SHALL BE CONSTRUCTED OF AND SUPPORTED BY CARBON STEEL NOT LESS THAN 0.054 IN. (NO. 16 MSG) IN THICKNESS OR STAINLESS STEEL NOT LESS THAN 0.043 IN. (NO. 18 MSG) IN THICKNESS.

ALL SEAMS, JOINTS, PENETRATIONS, AND DUCT-TO-HOOD COLLAR CONNECTIONS SHALL HAVE A LIQUIDTIGHT CONTINUOUS EXTERNAL WELD.



1 MAIN FLOOR HVAC PLAN

1/8" = 1'-0"

REVISION	DATE
DUCTWORK SIZE & ADDITION OF NOTE # 16	3-8-07

I hereby certify that this plan, specification or report was prepared by me or under my direct supervision and that I am a duly Licensed Engineer under the laws of the state of Minnesota.

Perry R. Nistler, P.E.
Date: 2-09-07 License No. 22468

MAIN FLOOR HVAC PLAN

PROJECT NO.:	06752
SCALE:	AS NOTED
DATE:	2-09-07
DRAWN BY:	KJH
DRAWN BY:	PPN

M1.1

Duffy Project File: 27-06752-M1.1